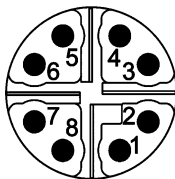




Mating face



X-coding
Mating face
acc. to IEC 61076-2-109



Identification

Part number

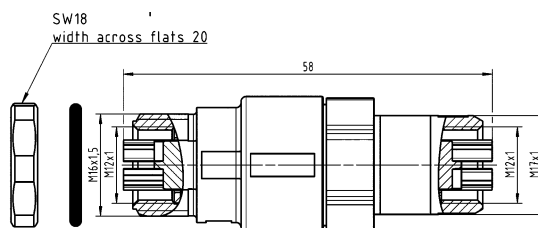
Drawing

Dimensions in mm

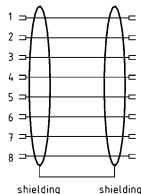
M12 Gender changer, Cat. 6A



21 03 381 6815



schematic diagram



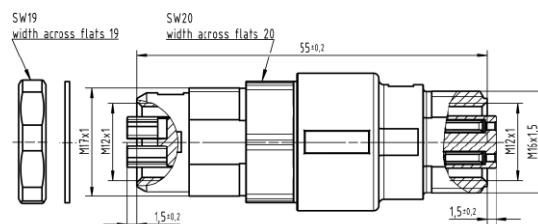
Panel cut out (1:1)



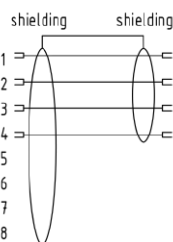
M12 Gender changer, Cat. 5
Female-Female

4 poles, D-coding
8 poles, X-coding

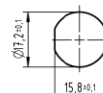
21 03 381 6402



schematic diagram



Panel cut out (1:1)



Wall bracket



21 01 000 0036

