

Accessories

Technical characteristics

Technical characteristics

Material (accessories) Steel, zinc plated

RoHS compliant

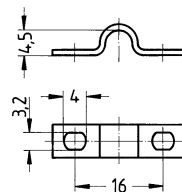
Identification	Cable diameter (mm)	Part number	Drawing (dimensions in mm)
----------------	---------------------	-------------	----------------------------

Clamp, for shield frames

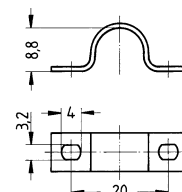


5
10

09 00 000 5341
09 00 000 5342



Cable diameter 5 mm



Cable diameter 10 mm