

Accessories

## Technical characteristics

Material (accessories) Thermoplastic, NBR

## Technical characteristics

Colour (accessories) Black  
RoHS compliant

Identification	Clamping range (mm)	Part number	Drawing (dimensions in mm)
----------------	---------------------	-------------	----------------------------

Cable entry seal



3 ... 4  
4 ... 5  
5 ... 6  
6 ... 7  
7 ... 8  
8 ... 9  
9 ... 10

09 00 000 5351  
09 00 000 5352  
09 00 000 5353  
09 00 000 5354  
09 00 000 5355  
09 00 000 5356  
09 00 000 5357

Cable entry seal,  
Additional strain relief can be provided by  
cable ties (max. width 8 mm)



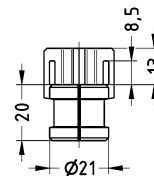
10 ... 11  
11 ... 12  
12 ... 13  
13 ... 14  
14 ... 15  
15 ... 16

09 00 000 5358  
09 00 000 5359  
09 00 000 5360  
09 00 000 5361  
09 00 000 5362  
09 00 000 5363

Cable entry seal,  
for ASI cable



09 00 000 5364



Dummy plugs



4.5 ... 6

09 00 000 5350  
09 00 000 6103

