



Han® PushPull, type acc. to IEC 61 076-3-117 variant 14
10-poles 50 V / 5 A

Features

- HARTING PushPull technology
- For the transmission of analog, low voltage and bus signals
- Fully shielded
- 10 contacts
- Touch-proof
- Easy and fast cable installation

Technical characteristics

Locking	PushPull technology acc. to IEC 61 076-3-117 variant 14
Degree of protection	IP65 / IP67
Mating face	acc. to IEC/PAS 61076-3-11x
Number of contacts	10
Electrical data acc. to DIN EN 61984	5 A 50 V 1.5 kV 3
Contact resistance	10 mΩ
Termination	Crimp or solder
Conductor cross section	AWG 24 ... 18; 0.25 ... 0.82 mm ²
Conductor diameter	max. 2.1 mm
Outer cable diameter	6.5 ... 9.5 mm / 4 ... 11 mm
Shielding	Fully shielded, 360° shielding contact
Mating cycles	min. 500
Temperature range	-40 °C ... +70 °C
Housing material	Plastic, black Zinc die-cast, nickel-plated
Flammability acc. to UL 94	V0

Identification

Part No.

Drawing

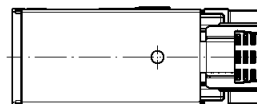
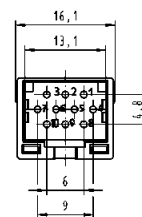
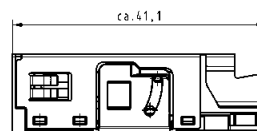
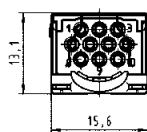
Dimensions in mm

Han® PushPull Signal Insert

for panel feed-through HIFF,
10-poles
incl. male insert

Order D-Sub crimp male
contacts separately

09 45 545 9010



D-Sub crimp contacts for device side

male, turned
AWG 24-20; 0.25-0.52 mm²

09 67 000 8576¹⁾

male, turned
AWG 22-18; 0.33-0.82 mm²

09 67 000 3576¹⁾

male, stamped
AWG 24-20; 0.25-0.56 mm²

09 67 000 8178²⁾

¹⁾ To be used with crimp tool 09 99 000 0501. Suitable locator: 09 99 000 0531

²⁾ To be used with crimp tool 09 99 000 0175.