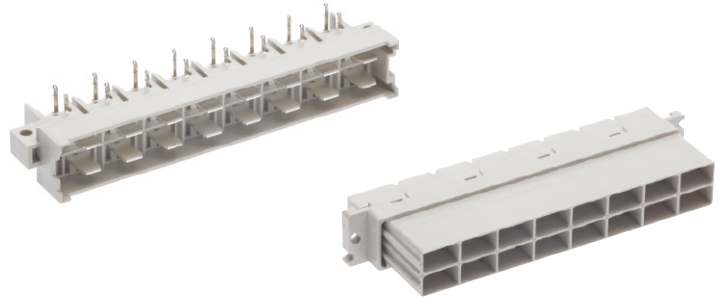


Number of contacts

16



Male connectors

Identification	No. of contacts	Part number	Drawing	Dimensions in mm
Male connector with angled solder pins	16	09 06 116 2511		
	16	09 06 316 2511 ^{b)}		
Female connector for faston 6.3 x 2.5	16	09 06 216 2411		

DIN Power up to 15 A

04
16

^{b)} Connectors with snap-in clips see chapter 00