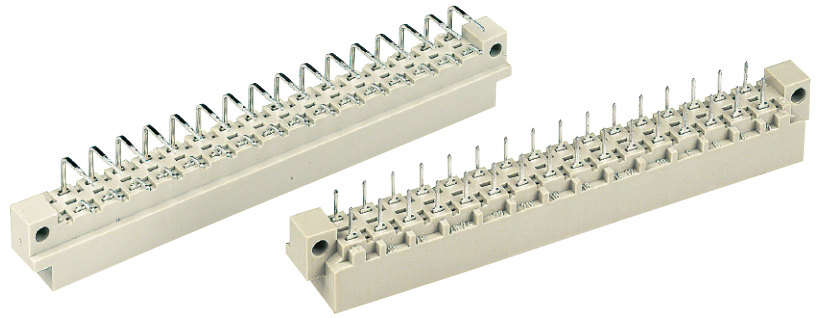


Number of contacts

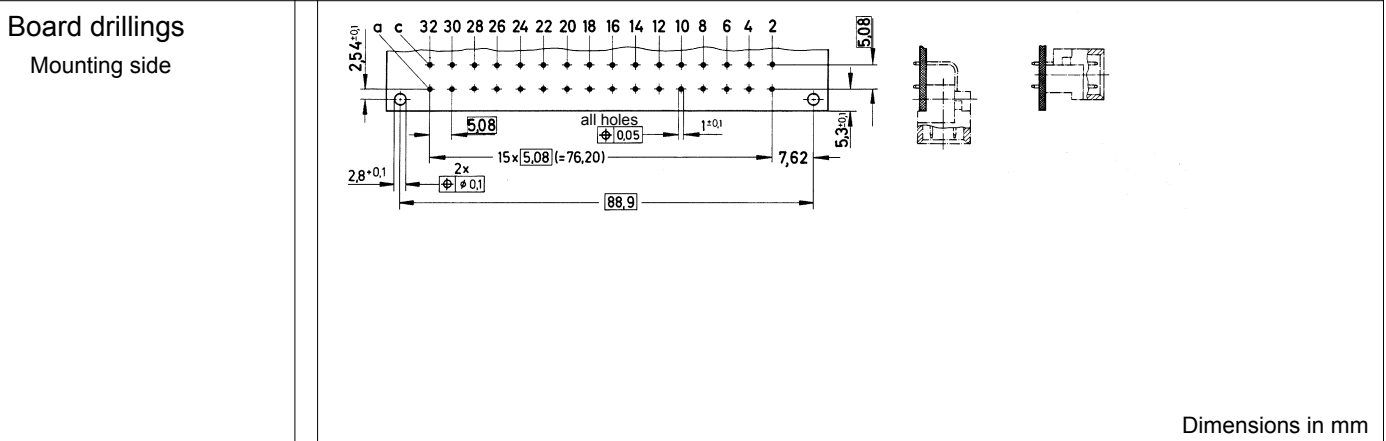
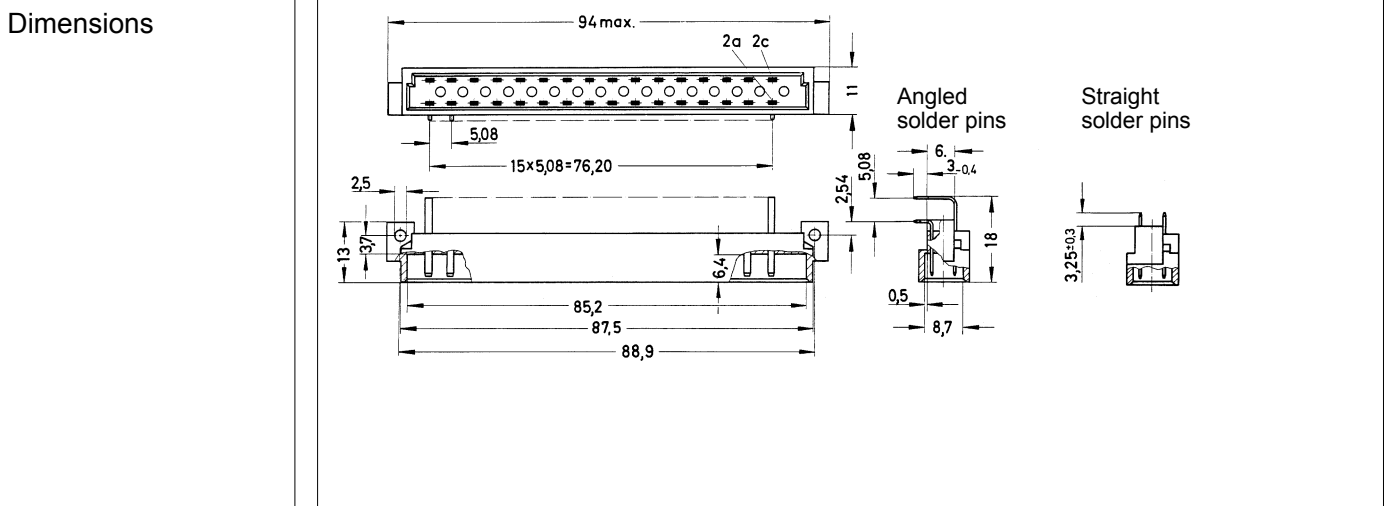
32



Male connectors

Identification	No. of contacts	Contact arrangement	Part number	Performance levels according to IEC 60603-2. Explanation chapter 00		
				3	2	1
Male connector with angled solder pins THR	32		09 04 132 7921	09 04 132 6921 09 04 332 6921 ^{b)} 09 04 632 6921 ^{c)}	09 04 132 2921	
	32			09 04 332 6919 ^{b)d)}		
	30 + 2▲			09 04 132 6951 09 04 632 6951 ^{c)}	09 04 632 2951 ^{c)}	
Male connector with straight solder pins	32			09 04 132 6922		
	30 + 2▲			09 04 132 6952		

DIN Power up to 6 A



03
11

▲ Male connectors with 2 leading contacts [(0.8 mm) pos. a2 and a3]
Other contact arrangements on request

^{b)} Connectors with snap-in clips see chapter 00
^{c)} Connectors with coding see chapter 00
^{d)} CTI > 400