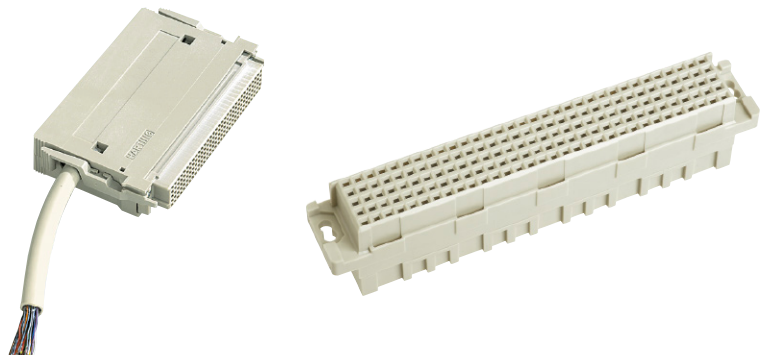


Number of contacts

max. 160



Female connectors

Identification	No. of contacts	Contact-arrangement	Suitable for	Part number
Female connector for crimp contacts order contacts separately fits into shell housing C see chapter 20	160		har-bus® 64 shroud	02 05 000 0004
	160		Male connector type R with 5 rows	02 05 000 0005
	160		Male connector type C with 5 rows	02 05 000 0003

Dimensions			

Identification	Part number	Performance levels according to IEC 61076-4-113. Explanation chapter 00
		2 1
Female crimp contacts har-bus® 64		
Bandoliered contacts (approx. 5,000 pieces)	02 05 000 2511	02 05 000 1511
Bandoliered contacts (approx. 500 pieces)	02 05 000 2512	02 05 000 1512
Individual contacts ¹⁾	02 05 000 2513	02 05 000 1513

	<p>Wire gauge mm² AWG Insulation ø mm</p> <p>0.09 - 0.5 28 - 20 0.7 - 1.5</p> <p>3.5 + 0.5 mm of insulation is stripped For the fabrication in line with the specification please use exclusively crimp tools approved by HARTING (see DIN EN 60352-2) Insertion, removal and crimping tools see chapter 30</p>	<p>Bandoliered contacts</p> <p>Individual contacts</p>
--	--	--

¹⁾ Packaging unit 1,000 pieces