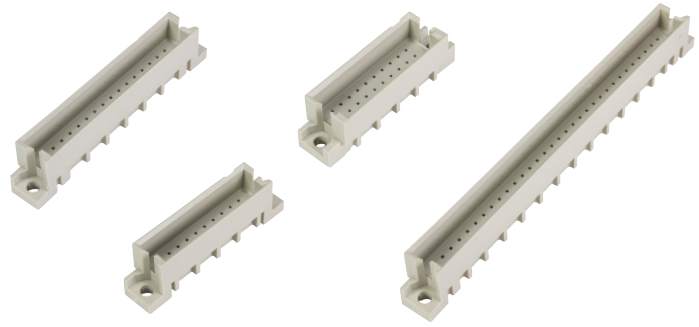


Number of contacts

64, 32, 30, 20



Pin shrouds
for types B, 2B, 3B, 3C, Q, 2Q, 3Q and 3R

DIN Signal
up to 2 A

Identification	No. of contacts	Part number	Drawing	Dimensions in mm																				
<p>Pin shrouds for female connectors type B for male connectors type Q</p>	64	09 72 164 3101																						
<p>Pin shrouds for female connectors type 2B for male connectors type 2Q</p>	32	09 27 132 3101																						
<p>Pin shrouds for female connectors type 3B for male connectors type 3Q</p>	20	09 75 120 3101	<p>A-A (2:1)</p> <table border="1"> <thead> <tr> <th></th> <th>a</th> <th>b</th> <th>c</th> <th>d</th> </tr> </thead> <tbody> <tr> <td>B / Q</td> <td>78.74</td> <td>85.2</td> <td>90.00</td> <td>95.00</td> </tr> <tr> <td>2B / 2Q</td> <td>38.10</td> <td>44.1</td> <td>50.00</td> <td>55.00</td> </tr> <tr> <td>3B / 3Q</td> <td>22.86</td> <td>29.4</td> <td>34.76</td> <td>39.66</td> </tr> </tbody> </table>		a	b	c	d	B / Q	78.74	85.2	90.00	95.00	2B / 2Q	38.10	44.1	50.00	55.00	3B / 3Q	22.86	29.4	34.76	39.66	
	a	b	c	d																				
B / Q	78.74	85.2	90.00	95.00																				
2B / 2Q	38.10	44.1	50.00	55.00																				
3B / 3Q	22.86	29.4	34.76	39.66																				
<p>Pin shrouds for female connectors type 3C for male connectors type 3R</p>	30	09 29 130 3101																						
<p>These pin shrouds must be pressed on the interfacing contacts.</p> <p>After the assembly the interfacing contacts should have a contact length of appr. 4.8 mm.</p>																								