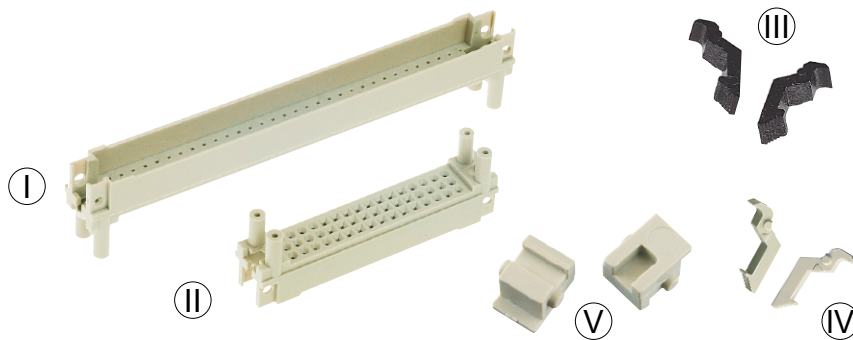


Number of contacts

96, 48

Pin shrouds
for types C, 2C, R, 2R



Identification	Termination length ± 0.3	pcb-thickness ± 0.4	Dimension a ± 0.1	Part number – Pin shrouds with		
				press-in fixing ¹⁾	screw fixing	
Pin shrouds for female connectors type C and for male connectors type R I	13.0/ 13.2	1.6	6.7	09 03 000 9956	09 03 000 9966	
		2.4	5.9	09 03 000 9957	09 03 000 9967	
		3.2	5.1	09 03 000 9958	09 03 000 9968	
		4.0	4.3	09 03 000 9959	09 03 000 9969	
		17.0	1,6	10,7	09 03 000 9951	09 03 000 9961
	17.0	2,4	9,9	09 03 000 9952	09 03 000 9962	
		3,2	9,1	09 03 000 9953	09 03 000 9963	
		4,0	8,3	09 03 000 9954	09 03 000 9964	
		4,8	7,5	09 03 000 9955	09 03 000 9965	
		5,6	6,7	09 03 000 9956	09 03 000 9966	
		6,4	5,9	09 03 000 9957	09 03 000 9967	
	20.0	4,0	11,75	09 03 000 9950	09 03 000 9960	
		4,8	10,7	09 03 000 9951	09 03 000 9961	
		5,6	9,9	09 03 000 9952	09 03 000 9962	
		6,4	9,1	09 03 000 9953	09 03 000 9963	
		7,2	8,3	09 03 000 9954	09 03 000 9964	
	Pin shrouds for female connectors type 2C and for male connectors type 2R II	13.0/ 13.2	1.6	6.7	09 23 000 9956	09 23 000 9966
			2.4	5.9	09 23 000 9957	09 23 000 9967
3.2			5.1	09 23 000 9958	09 23 000 9968	
4.0			4.3	09 23 000 9959	09 23 000 9969	
17.0			1,6	10,7	09 23 000 9951	09 23 000 9961
17.0		2,4	9,9	09 23 000 9952	09 23 000 9962	
		3,2	9,1	09 23 000 9953	09 23 000 9963	
		4,0	8,3	09 23 000 9954	09 23 000 9964	
		4,8	7,5	09 23 000 9955	09 23 000 9965	
		5,6	6,7	09 23 000 9956	09 23 000 9966	
		6,4	5,9	09 23 000 9957	09 23 000 9967	
20.0		4,0	11,75	09 23 000 9950	09 23 000 9960	
		4,8	10,7	09 23 000 9951	09 23 000 9961	
		5,6	9,9	09 23 000 9952	09 23 000 9962	
		6,4	9,1	09 23 000 9953	09 23 000 9963	
		7,2	8,3	09 23 000 9954	09 23 000 9964	

Identification

Part number

Locking lever for female connectors type C, 2C*



09 03 000 9914

Locking lever for female connectors type R, 2R*



09 03 000 9913

Fixing bracket for shell housing C*



09 03 000 9921

* order 2 pieces per connector

¹⁾ Processing only with press-in tools, see chapter 30