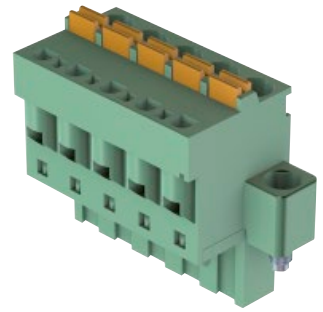


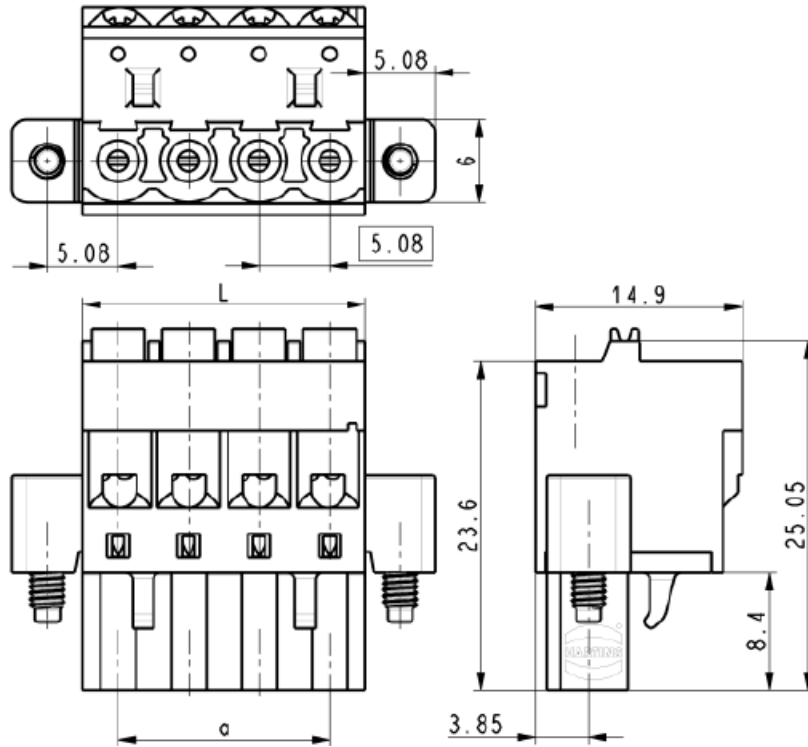
PCB connectors female
with screw flange,
horizontal
with push-in-spring-cage termination
pitch 5.08 mm



Drawing

Dimensions in mm

Dimensions



L = pitch x poles
a = pitch x (poles - 1)

Technical characteristics

Technical data

Rated current 12 A
Pitch 5.08 mm

Surge voltage category /
pollution degree

III/3	III/2	II/2
250 V	300 V	600 V
4 kV	4 kV	4 kV

Rated voltage

Rated surge voltage

Material data

Group of insulation material I
Type of insulation material PA / PPA
Flammability rating per UL 94 V0
Operating temperature -40 °C ... +110 °C
Contact material copper alloy
Contact plating tin plated
 UL approval (E 102079)
Screw flange M2.5

Conductor data

Connection technology wire push-in-spring-cage termination
Conductor size solid / stranded 0.2 - 2.5 / 0.2 - 2.5 mm²
stranded with ferrules
without / with plastic sleeve 0.5 - 2.5 / 0.5 - 2.5 mm²
Conductor size AWG 30 - 12
Stripping length 10 mm

Approval data (UL)

Use group	B	C	D
Rated voltage	300 V	–	300 V
Rated current	12 A	–	12 A