

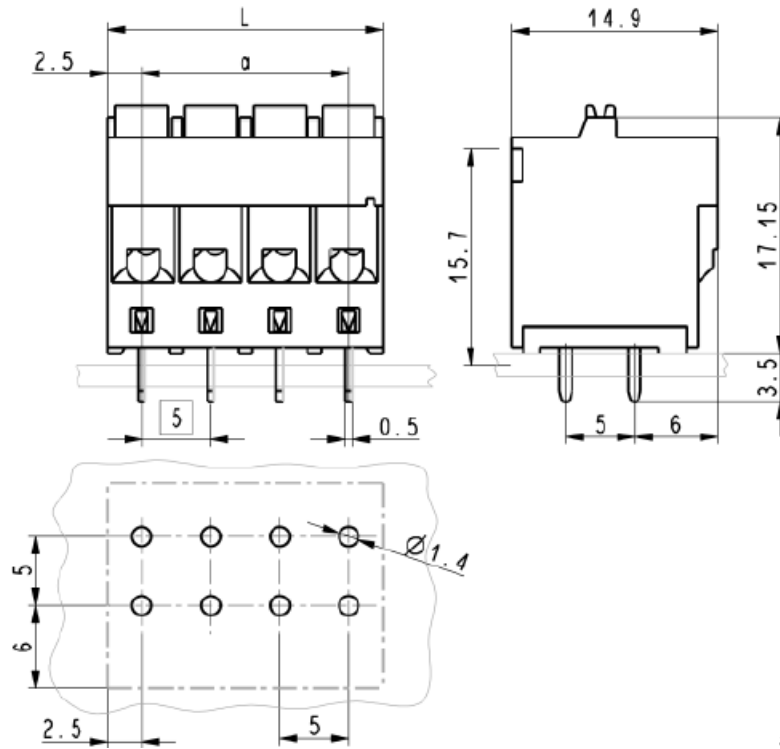


PCB terminal blocks,
vertical with push-in-spring-cage
termination for reflow soldering
pitch 5.00 mm

Drawing

Dimensions in mm

Dimensions



L = pitch x poles
a = pitch x (poles - 1)

Technical characteristics

Technical data

Rated current 12 A
Pitch 5.00 mm

Surge voltage category /
pollution degree

| | | |
|-------|-------|-------|
| III/3 | III/2 | II/2 |
| 300 V | 300 V | 600 V |
| 4 kV | 4 kV | 4 kV |

Rated voltage

Rated surge voltage

Material data

Group of insulation material I
Type of insulation material PA / PPA
Flammability rating per UL 94 V0
Operating temperature -40 °C ... +110 °C
Contact material copper alloy
Contact plating tin plated
UL approval (E 102079)



Conductor and solder pin data

Connection technology wire push-in-spring-cage termination
Conductor size solid / stranded 0.2 - 2.5 / 0.2 - 2.5 mm²
stranded with ferrules
without / with plastic sleeve 0.5 - 2.5 / 0.5 - 2.5 mm²
Conductor size AWG 30 - 12
Stripping length 10 mm
Solder pin: drilled hole diameter 1.4 mm

Approval data (UL)

| | | | |
|---------------|-------|---|-------|
| Use group | B | C | D |
| Rated voltage | 300 V | - | 300 V |
| Rated current | 12 A | - | 12 A |