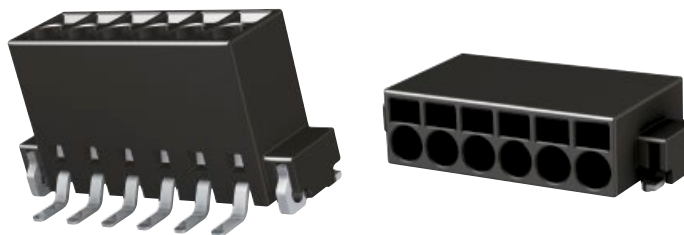


PCB terminal blocks,  
vertical/horizontal  
with push-in-spring-cage termination  
for SMT reflow soldering  
pitch 2.54 mm



Identification	No. of contacts	Part number	Packaging unit (pieces)
PCB terminal blocks, vertical/horizontal with push-in-spring-cage termination			vertical / horizontal
	2	14 01 021 310 . . . .	250 / 500
	3	14 01 031 310 . . . .	250 / 500
	4	14 01 041 310 . . . .	250 / 500
	5	14 01 051 310 . . . .	250 / 500
	6	14 01 061 310 . . . .	250 / 500
	7	14 01 071 310 . . . .	250 / 500
	8	14 01 081 310 . . . .	250 / 500
	9	14 01 091 310 . . . .	250 / 500
	10	14 01 101 310 . . . .	250 / 500
	11	14 01 111 310 . . . .	250 / 500
	12	14 01 121 310 . . . .	250 / 500

Please insert digit for

- vertical ▶ 1
- horizontal ▶ 2