

thermoplastic / metal

Identification

Part number

Drawing

Dimensions in mm

Hoods

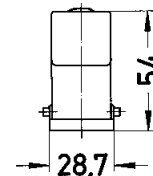
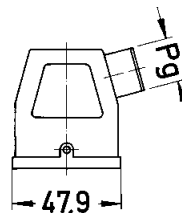
Hoods

Thermoplastic  
side-entry  
Cable gland order separately



**09 12 008 0527**

Pg 16



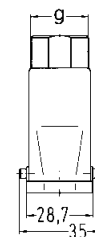
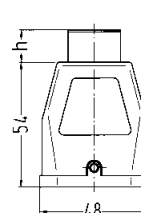
Hoods

Thermoplastic  
top-entry  
Cable gland order separately



**19 12 008 0429**  
**09 12 008 0427**  
**09 12 008 0429**

M 25  
Pg 16  
Pg 21



h	g
14	M 25x1.5
13	Pg 16
13	Pg 21

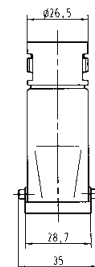
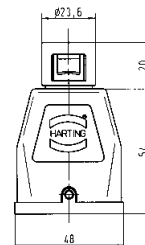
Hoods

Thermoplastic  
top-entry  
Cable gland order separately



**09 12 008 0428**

Pg 16



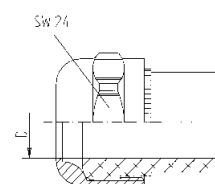
Cable seal

Thermoplastic  
for hoods  
Thrust bolt and insert



**09 00 000 5059**  
**19 12 000 5157**  
**19 12 000 5158**  
**09 00 000 5157**  
**09 00 000 5158**

Pg 16  
M 25  
M 25  
Pg 21  
Pg 21



	cable	
	min.	max.
<b>09 00 000 5059</b>	11.5 mm	15.5 mm
<b>19 12 000 5157</b>	10.5 mm	14 mm
<b>19 12 000 5158</b>	14 mm	17 mm
<b>09 00 000 5157</b>	14 mm	18 mm
<b>09 00 000 5158</b>	17 mm	20.5 mm