



Han® PushPull, type acc. to IEC 61076-3-117 variant 14
 Housing bulkhead mounting for device integration
 Optical connector based on SCRJ

Features

- HARTING PushPull technology
- Compact design
- High packing density
- Device integration via transceiver
- Han® PushPull SCRJ for POF is according the requirements of AIDA (German Domestic Automobile Manufacturers)

Technical characteristics

Locking	PushPull technology
Degree of protection	IP65 / IP67
Mating face	SCRJ acc. to IEC 61754-24
Fiber Typen	POF ¹⁾ 1 mm HCS ²⁾ 200 µm / 230 µm MM 62.5 µm / 125 µm MM 50 µm / 125 µm SM 10 µm / 125 µm
Mating cycles	min. 750
Temperature range	-40 °C ... +70 °C
Housing material	Plastic, black
Flammability acc. to UL 94	V0

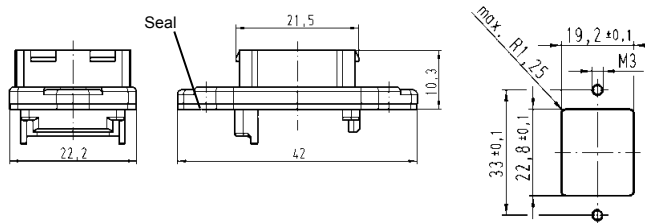
Identification	Part number	Drawing	Dimensions in mm
----------------	-------------	---------	------------------

Components device side

Housing bulkhead mounting
 Optical transceiver
 not included

plastic

09 35 002 0323



Protection cover IP65 / IP67

09 35 002 5402

Reference for transceiver
 as well as mounting instruction
 on request

1) POF = Polymer-Optical Fibre
 2) HCS® = Hard Clad Silica (registered trademark of SpecTran Corporation)