



Han® PushPull, type acc. to IEC 61076-3-117 variant 14 cable to cable housing

Features

- HARTING PushPull technology
- Ideal for prototyping
- Can be combined with panel feed-throughs for power, data and signal

Technical characteristics

Locking	PushPull technology acc. to IEC 61076-3-117 variant 14
Degree of protection	IP65 / IP67
Outer cable diameter	6.5 ... 9.5 mm / 9 ... 13 mm
Mating cycles	min. 750
Temperature range	-40 °C ... +70 °C
Housing material	Plastic, black
Flammability acc. to UL 94	V0

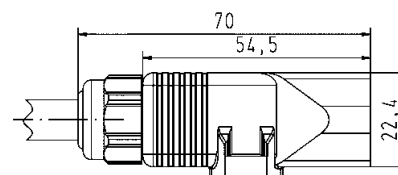
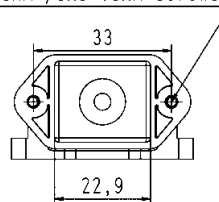
Identification	Part number	Drawing	Dimensions in mm
----------------	-------------	---------	------------------

Han® PushPull cable to cable housings, plastic
(Order housing bulkhead mounting and insert separately)

for outer cable diameter 6.5 ... 9.5 mm

09 35 002 0431

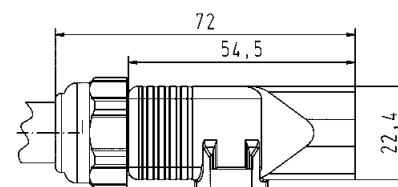
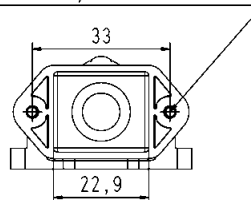
2X REMFORM $\phi 3 \times 8$ TORX screws



for outer cable diameter 9 ... 13 mm

09 35 002 0433

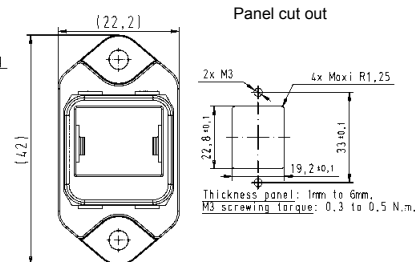
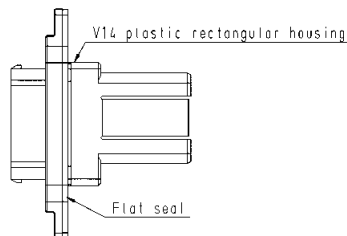
2X REMFORM $\phi 3 \times 8$ TORX screws



Suitable bulkhead housing, plastic

for RJ45

09 35 012 0331



Inserts for RJ45

RJ 45: 8-poles, Cat. 6 / class E_A
Ha-Vis preLink® set AWG 22/23
HARTING RJ Industrial® cable jack with IDC termination

20 82 001 0001

AWG 22-24, 8-poles

09 45 545 1562

AWG 24-28, 8-poles

09 45 545 1561

AWG 22-24, 4-poles, Cat. 5

09 45 545 1120