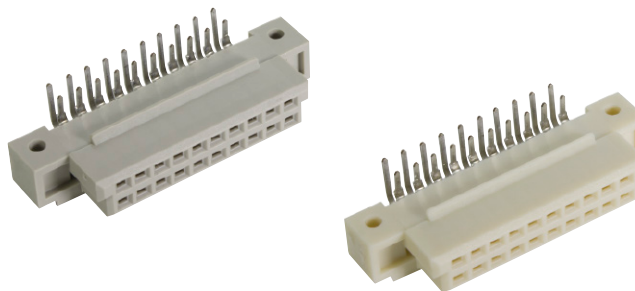


Number of contacts

# 32

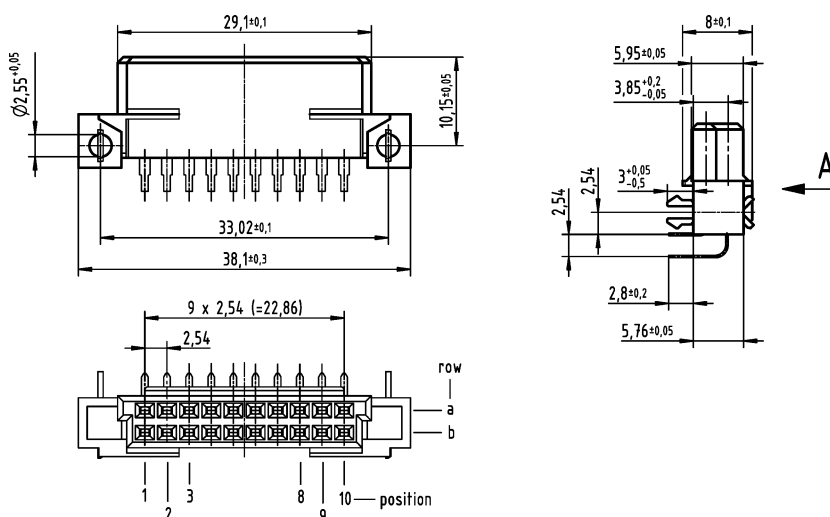


Female connectors

DIN Signal up to 2 A

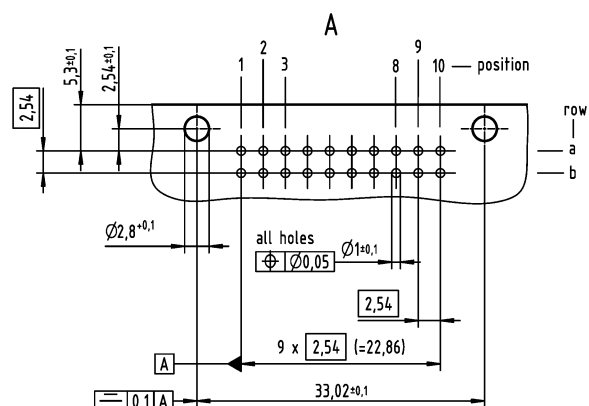
Identification	No. of contacts	Contact arrangement	Part number	Performance levels according to IEC 60603-2. Explanation chapter 00
			3	2
Female connector with angled solder pins	20		Performance level 3 on request	09 75 220 6801 09 75 420 6801 <sup>b)</sup>
THR	20			09 75 220 6804 <sup>d)</sup> 09 75 420 6804 <sup>b)d)</sup>
THR on a reel				09 75 220 6804 791 <sup>d)</sup>
				1
				Performance level 1 on request

Dimensions

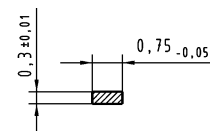


Board drillings

Mounting side



Cross section of solder terminations



Cross area (A) of contacts row a, b:  
A = 0.20 - 0.23 mm<sup>2</sup>

Dimensions in mm

Other contact arrangements as well with lagging/leading pins on request

<sup>b)</sup> Connectors with snap-in clips see chapter 00

<sup>d)</sup> CTI > 400