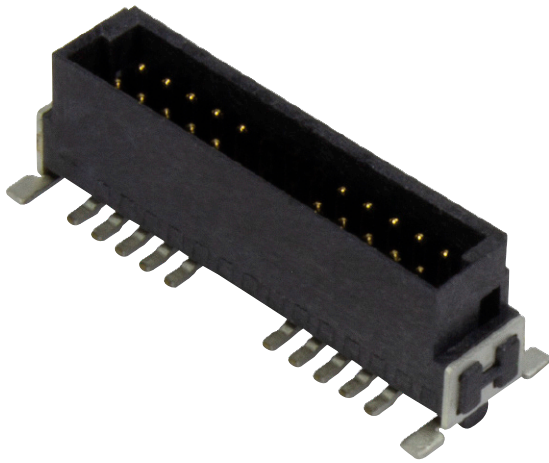
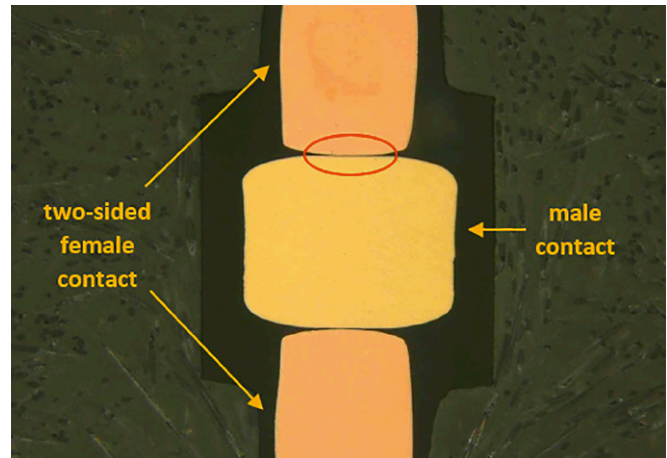


Partial loading



In specific cases it is possible that special requirements are not covered by the available standard variants. For example, it might be necessary to have a higher working voltage or allow for PCB traces under the connector. In such cases, it is possible to load the connector partially, i.e. leave out certain contact pins. By this means it is possible to increase the creepage and clearance distances and create free space for additional PCB tracks under the connector. HARTING offers the possibility to leave out one or several contacts in any position, which ensures a high degree of flexibility.

Reliable contacting



The production of stamped contacts has been one of HARTING's core competencies for a long time. HARTING leveraged this experience to create reliable contacts for *har:flex*®. To achieve this goal, both a high-quality contacting area and a suitable plating are crucial in order to maintain the contacting functionality of the contact over the course of its lifetime. The female contact is made with high precision, and a special polishing process ensures a defined contacting area, so that the contact point features a particularly high quality. In conjunction with the standard plating for performance level 1 this method guarantees a reliable electric connection for at least 500 mating cycles.