



## Han® 3 A RJ45 connector

Identification	Part number	Drawing	Dimensions in mm
----------------	-------------	---------	------------------

### M20 cable glands

③

metal:

- 5 ... 9 mm
- 5 ... 12 mm
- 6 ... 12 mm
- 10 ... 14 mm

- 19 00 000 5080
- 19 00 000 5081
- 19 00 000 5082
- 19 00 000 5084

plastic, grey:

- 5 ... 9 mm
- 6 ... 12 mm
- 10 ... 14 mm

- 19 00 000 5180
- 19 00 000 5182
- 19 00 000 5184

plastic, black:

- 5 ... 9 mm
- 6 ... 12 mm
- 10 ... 14 mm

- 19 00 000 5181
- 19 00 000 5183
- 19 00 000 5185

metal, EMC version:

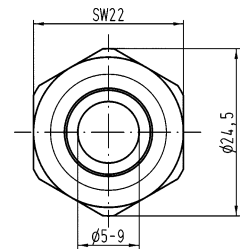
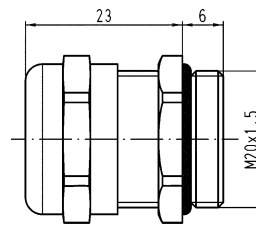
- 6.5 ... 9.5 mm
- 4.0 ... 6.5 mm
- 7.0 ... 10.5 mm
- 9.0 ... 13.0 mm

- 19 62 000 5080
- 19 62 000 5081
- 19 62 000 5082
- 19 62 000 5084

stainless steel:

- 6 ... 13 mm

- 19 44 000 5082



### Accessories

coding pin set  
for 4 different codings

09 45 820 0000