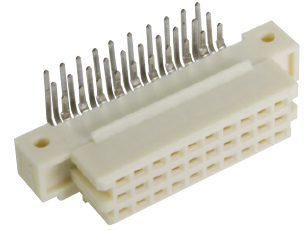


Number of contacts

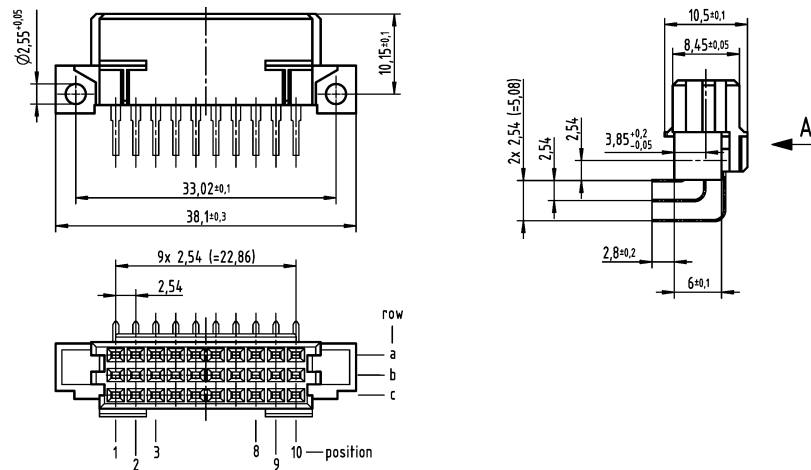
30



Female connectors

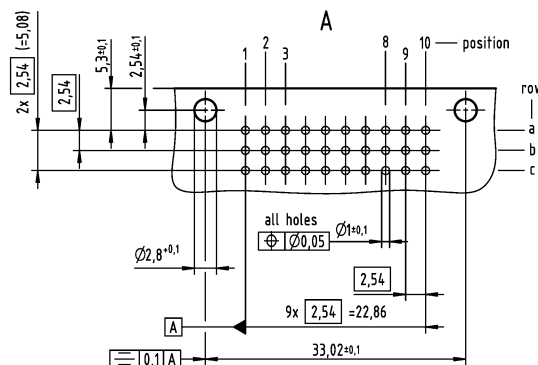
Identification	No. of contacts	Contact arrangement	Part number	Performance levels according to IEC 60603-2. Explanation chapter 00
			3	2 1
Female connector with angled solder pins	30		Performance level 3 on request	09 29 230 6801 09 29 430 6801 ^{b)}
THR THR on a reel	30			09 29 230 6804 ^{d)} 09 29 430 6804 ^{b)d)} 09 29 230 6804 791 ^{d)}

Dimensions

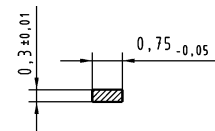


Board drillings

Mounting side



Cross section of solder terminations



Cross area (A) of contacts row a, b, c:
A = 0.20 - 0.23 mm²

Dimensions in mm

Other contact arrangements as well with lagging/leading pins on request

^{b)} Connectors with snap-in clips see chapter 00

^{d)} CTI > 400