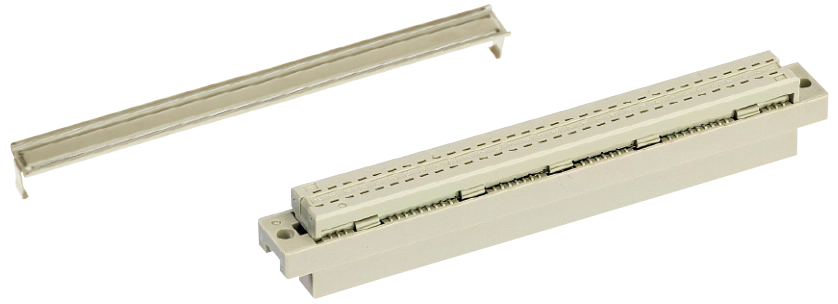


Number of contacts

64



Female connectors

DIN Signal
up to 2 A

Identification	No. of contacts	Part number	Drawing	Dimensions in mm
Female connector for insulation displacement	64	Performance level 2 ¹⁾ 09 03 264 6828		
		Performance level 3 ¹⁾ 09 03 264 7828		
Strain relief (metal)		09 03 000 9940	<p>Cable 1 to contact 1 c Contact arrangement View from termination side</p>	
Panel cut out			<p>Mateable with 3 row male connector type C, no female contacts in the middle row</p>	
Flat cable AWG 28/7			<p>Wire (tinned) Gauge Insulation material as per UL style</p>	²⁾ Termination area spacing = 508 mm Important: always store reels vertically Cu AWG 28/7 0.089 mm ² PVC
Round flat cable ³⁾			<p>Edge mark on first conductor</p>	³⁾ Termination area spacing = 100 mm
Bench press Base plate		09 99 000 0114 09 99 000 0150		
Cable cutter		09 99 000 0116		
Spare parts Blade Cutting plate		09 99 000 0179 09 99 000 0180		

Further components and accessories for insulation displacement see interface catalogue, chapter 32

¹⁾ acc. to IEC 60 603-2