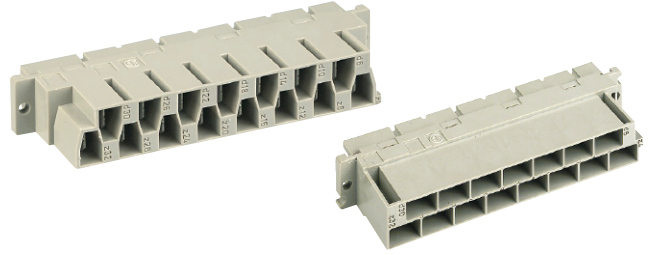


Number of contacts

15



Female connectors

Identification	No. of contacts	Part number	Drawing	Dimensions in mm
<p>Female connector for faston 6.3 x 2.5¹⁾</p> <p>Cannot be used in a shell housing</p>	15	<p>Performance level 1 acc. to IEC 60603-2</p> <p>09 06 215 2811</p>	<p>84,9</p> <p>10,1</p> <p>21</p> <p>84</p> <p>14x5,08=71,12</p> <p>8,17</p> <p>6d</p> <p>4z</p> <p>5,08</p> <p>90</p> <p>95max.</p> <p>12,4</p> <p>2,9</p> <p>6,3x0,8</p> <p>0,3</p> <p>0,2</p> <p>14,8</p> <p>0,1</p> <p>View from termination side</p> <p>..X"</p> <p>..X"</p> <p>Z32</p>	
<p>Female connector for faston 6.3 x 2.5¹⁾</p> <p>May be used in a shell housing</p>	15 15	<p>09 06 215 2871</p> <p>09 06 215 2871 222^{f)}</p>	<p>84,9</p> <p>10,1</p> <p>21</p> <p>6,3x0,8</p> <p>84,5</p> <p>14x5,08=71,12</p> <p>8,17</p> <p>6d</p> <p>4z</p> <p>5,08</p> <p>90</p> <p>95max.</p> <p>12,4</p> <p>2,9</p> <p>8</p> <p>12,7</p> <p>0,3</p> <p>0,2</p> <p>14,8</p> <p>0,1</p> <p>View from termination side</p> <p>..X"</p> <p>..X"</p> <p>D30</p> <p>Z32</p> <p>32 30 28 26 24 22 20 18 16 14 12 10 8 6 4</p>	<p>Shell housing see chapter 20</p>
Panel cut out			<p>M2,5/±0,2</p> <p>85</p> <p>90±0,1</p> <p>95,5</p> <p>15,5</p> <p>1,5</p> <p>15,5</p> <p>5,7</p> <p>7,2</p> <p>15,2</p>	

DIN Power up to 15 A

04
12

¹⁾ With shroud coding, see chapter 00
^{f)} Railway classification NFF 16-101, Smoke index: F1, Flammability class: I2