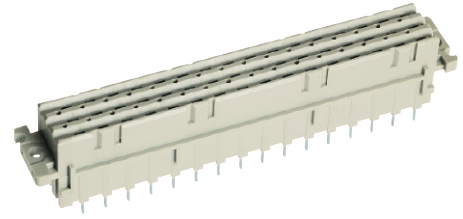


Number of contacts

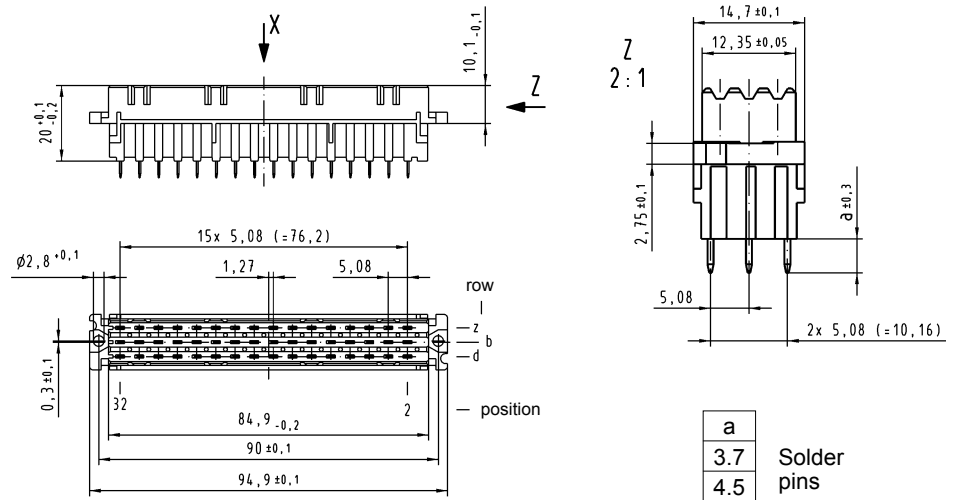
48, 32



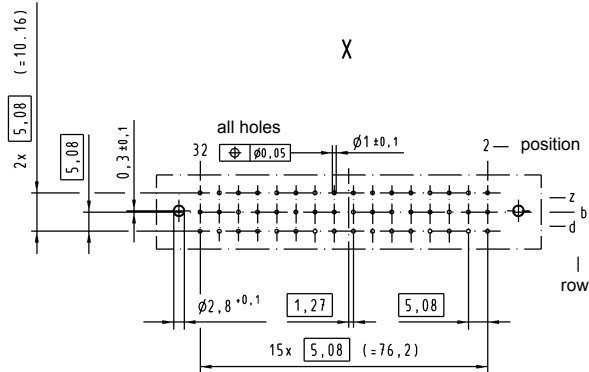
Female connectors

Identification	No. of contacts	Contact arrangement	Part number	Performance levels according to IEC 60 603-2. Explanation chapter 00
			3	2 1
Female connector with solder pins 3.7 mm ¹⁾	48			09 06 248 6848 09 06 248 2848
	32			09 06 232 6848 09 06 232 2848
	32			09 06 232 6858
Female connector with solder pins 4.5 mm ¹⁾	48		09 06 248 7835	09 06 248 6835 09 06 248 2835
	32			09 06 232 6835 09 06 232 2835
	32			09 06 232 6845 09 06 232 2845

Dimensions



Board drillings
Mounting side



Dimensions in mm

DIN Power up to 6 A

¹⁾ With shroud coding, see also chapter 00