

Device side



Identification

Part number

Drawing

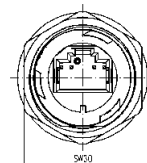
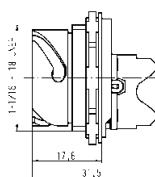
Dimensions in mm

Han-Max®
RJ45 panel feed-through

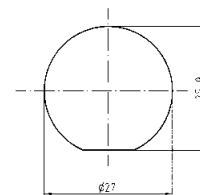
unshielded version (UTP)



09 15 300 0301



Panel cut out for max.
Panel thickness 2.3 mm

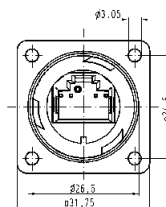
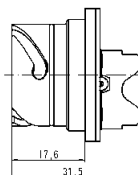


Han-Max® MS
RJ45 panel feed-through

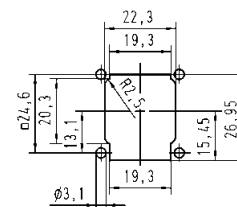
unshielded version (UTP)



09 15 300 0311



panel feed through



Han-Max® Protection cover
Device side



09 15 300 5411

