


HARTING RJ Industrial® RJ45 jacks for direct device integration

Advantages

- Compact design
- Category of transmission Cat. 5
- Suitable for PoE (IEEE 802.3af) and PoE+ (IEEE 802.3at)
- Temperature range -40 °C ... +70 °C
- SMC compatible

Technical characteristics

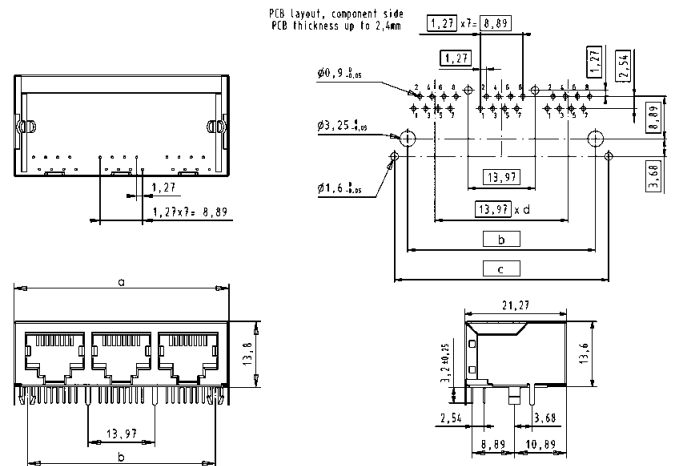
Locking	RJ45 acc. to IEC 60603-7
Number of contacts	8
Degree of protection	IP20
Rated voltage	125 V AC
Rated current	1.5 A
Mating face	RJ45 acc. to IEC 60603-7
Mating cycles	min. 750
	UL approval

Identification	Part number	Drawing	Dimensions in mm
----------------	-------------	---------	------------------

Components device side

RJ45 jack

2 ports, 90° angled, THT	09 45 551 1122	
3 ports, 90° angled, THT	09 45 551 1123	
4 ports, 90° angled, THT	09 45 551 1124	
6 ports, 90° angled, THT	09 45 551 1126	
8 ports, 90° angled, THT	09 45 551 1128	



	a	b	c	d
2 ports	31.12	25.40	30.87	1
3 ports	45.09	39.37	44.84	2
4 ports	59.06	53.34	58.81	3
6 ports	87.00	81.28	86.75	5
8 ports	114.94	109.22	114.69	7