



Housing bulkhead mounting and power females for device integration

Features

- HARTING PushPull technology
- Touch-proof
- Device side: male
 - Solder variant, angled and straight
- AIDA-conform (German Domestic Automobile Manufactures)

Technical characteristics

Locking	PushPull technology
Degree of protection	IP65 / IP67
Number of contacts	4 + PE
Electrical data	16 A 24 V 4 kV 3
acc. to DIN EN 61984	Male insert with solder termination
Termination	min. 500
Mating cycles	-40 °C ... +70 °C
Temperature range	Plastic, black
Housing material	V0
Flammability acc. to UL 94	

Identification

Part number

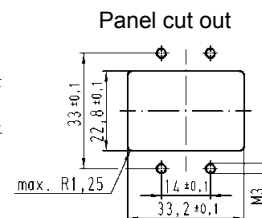
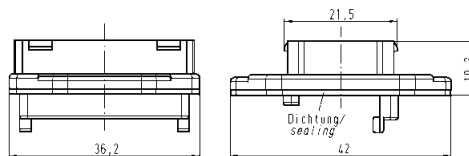
Drawing

Dimensions in mm

Components device side

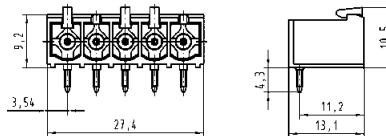
Housing bulkhead mounting plastic

09 35 004 0321



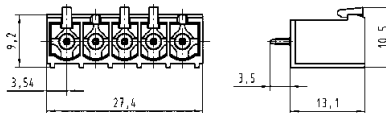
Male insert with solder termination angled

09 35 004 3003



Male insert with solder termination straight

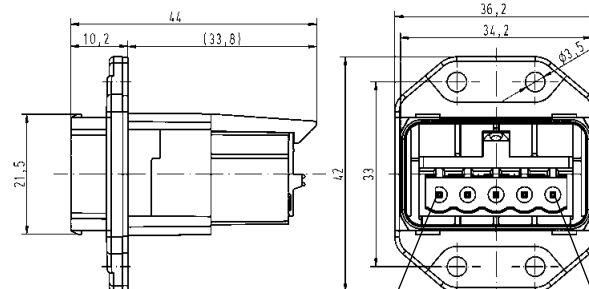
09 35 004 3004



Panel feed-through, plastic

incl. housing and male insert with spring force connection

09 35 431 0331



Protection cover IP65 / IP67

09 35 004 5411

Pin 1 14 Pin 5