

Features

- Robust housing
- Compact design saves space
- Modular structure increases flexibility
- Simple and quick assembly
- Two-part hood

Technical characteristics

| | |
|------------------------------------------------------------|-------------------------------------|
| Limiting temperature | -40 ... +125 °C |
| Mating cycles | ≥500 |
| Degree of protection acc. to IEC 60529 | IP65 |
| Material (hood/housing) | Aluminium die-cast, Zinc die-cast |
| Surface (hood/housing) | Powder-coated |
| Colour (hood/housing) | RAL 7037 (dust grey) |
| Material (seal) | NBR |
| Material (locking) | Polycarbonate (PC), Stainless steel |
| Colour (locking) | RAL 7037 (dust grey) |
| Material (accessories) | Zinc die-cast |
| Material flammability class acc. to UL 94 (locking levers) | V-0 |
| RoHS | compliant, compliant with exemption |

Specifications and approvals

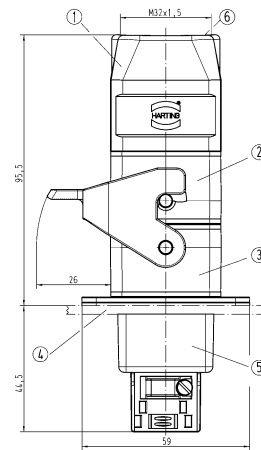
IEC 61984



Details

Conductor cross-section PE 0.5 ... 10 mm²

Conductor cross-section 10 mm² only with ferrule crimping tool 09 99 000 0374



- ① Hood with top entry
- ② Carrier hood
- ③ Bulkhead mounted housing with locking lever
- ④ Switch board panel
- ⑤ Panel feed through housings
- ⑥ Cable entry